

LIMA MEMORIAL HEALTH SYSTEM

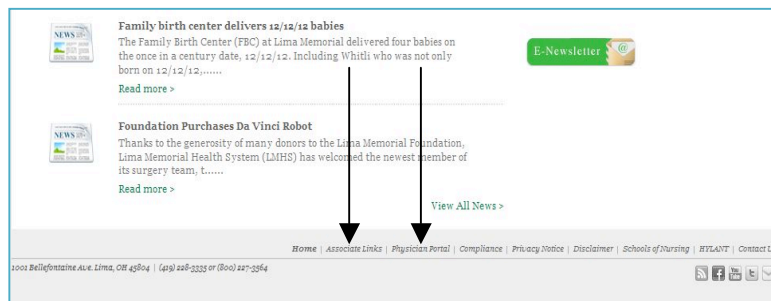
Lima Memorial Citrix Gateway Log-On

Instructions for Internet Explorer Version 7, 8 and 9

1. Go to www.limamemorial.org

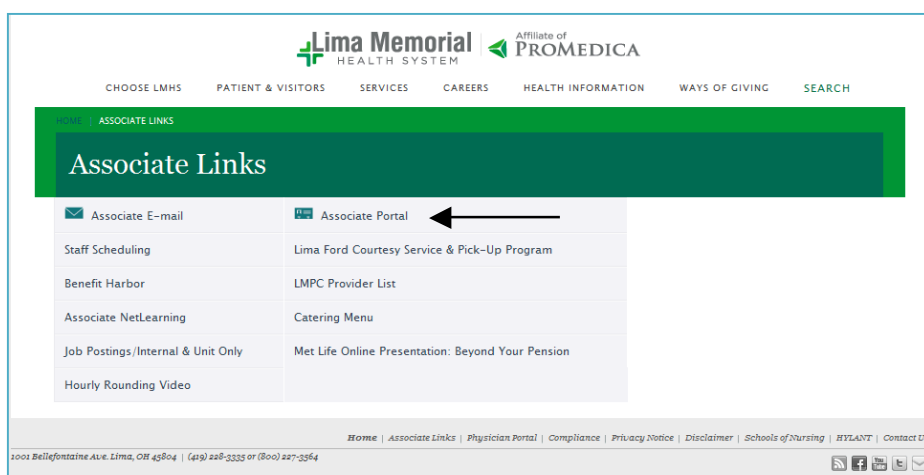
2. **ASSOCIATES** = Scroll to the bottom of the page and click the **Associate Links**

PHYSICIANS = Scroll to the bottom of the page and click on **Physician Portal**.



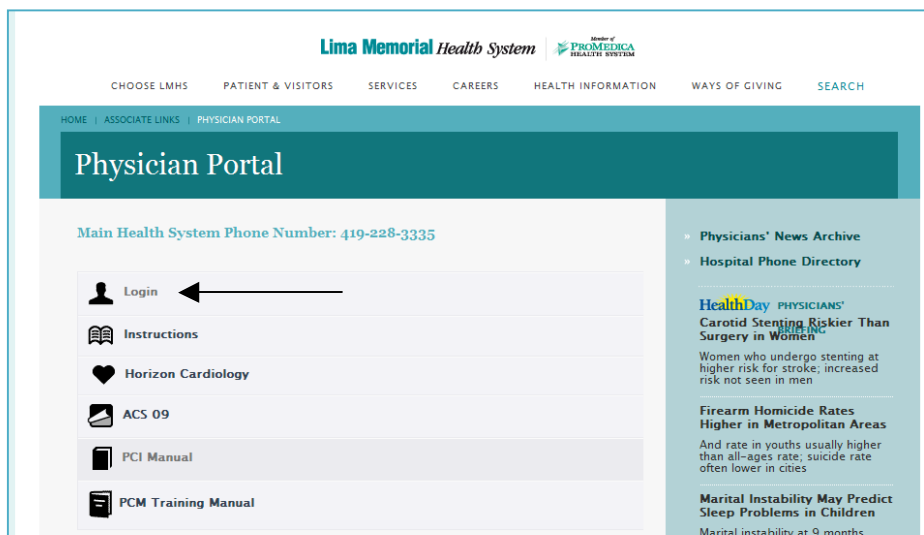
3. Associates Links Screen

Click on the Associates Portal link



3. Physicians Portal Screen

Click on the **Login** link



LIMA MEMORIAL HEALTH SYSTEM

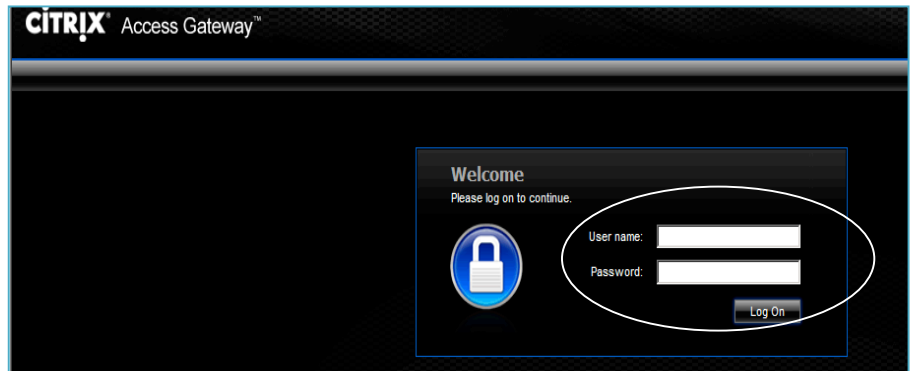
Lima Memorial Citrix Gateway Log-On

Instructions for Internet Explorer Version 7, 8 and 9

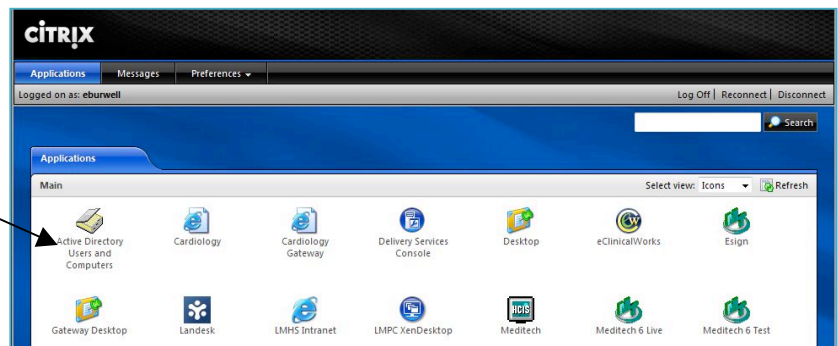
4. This will bring you to the Citrix Log-On page.
5. Enter your **username**.
Your username is your first initial and last name. (i.e. john smith is jsmith).
6. Enter your **password**.
7. Click “**Log On**”

NOTE: Some lengthy last names (greater than 9 letters) have been shorten so if you are not sure of your username or password call the helpdesk at #5005

Shortcut: If you wish to create a shortcut to citrix log-on, this is the page to do it on. Right click your mouse, select Create Shortcut.

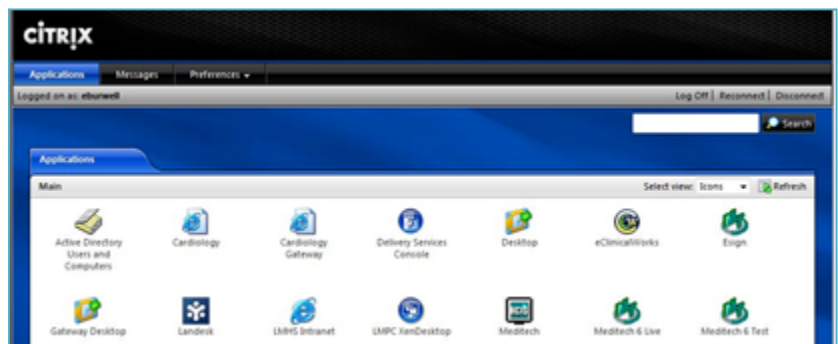


8. Once you have authenticated and logged on the following screen will appear with your assigned Application



9. Click on the appropriate icon to launch the application you wish to open (i.e. to launch Meditech, click on the Meditech icon)

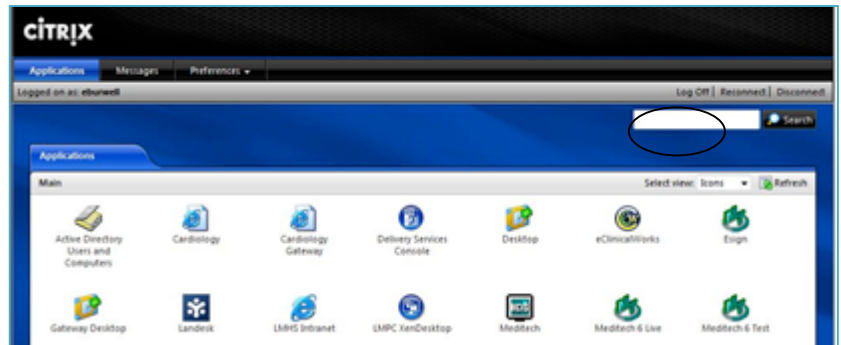
NOTE: If application will not launch or get an error message about a launch. ica. file see pages. 4, 5 and 6 for additional instructions.



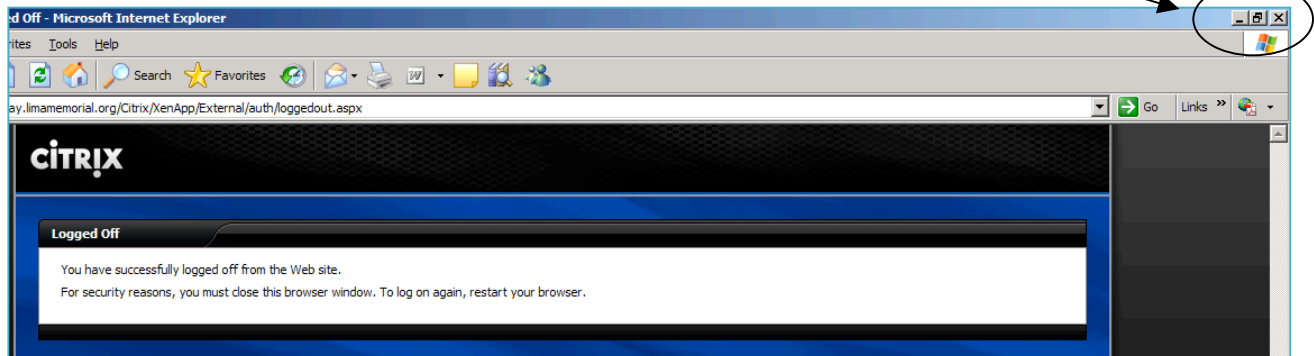
LIMA MEMORIAL HEALTH SYSTEM
Lima Memorial Citrix Gateway Log-On
Instructions for Internet Explorer Version 7, 8 and 9

10. To log off application, log off each application as you normally would.

11. Then log off of the Citrix Web Interface by clicking on “Log Off” as noted.



12. The following screen will appear telling you that you have logged off. Next close your web browser by clicking on the “X” in the right-hand corner of the screen.



LIMA MEMORIAL HEALTH SYSTEM

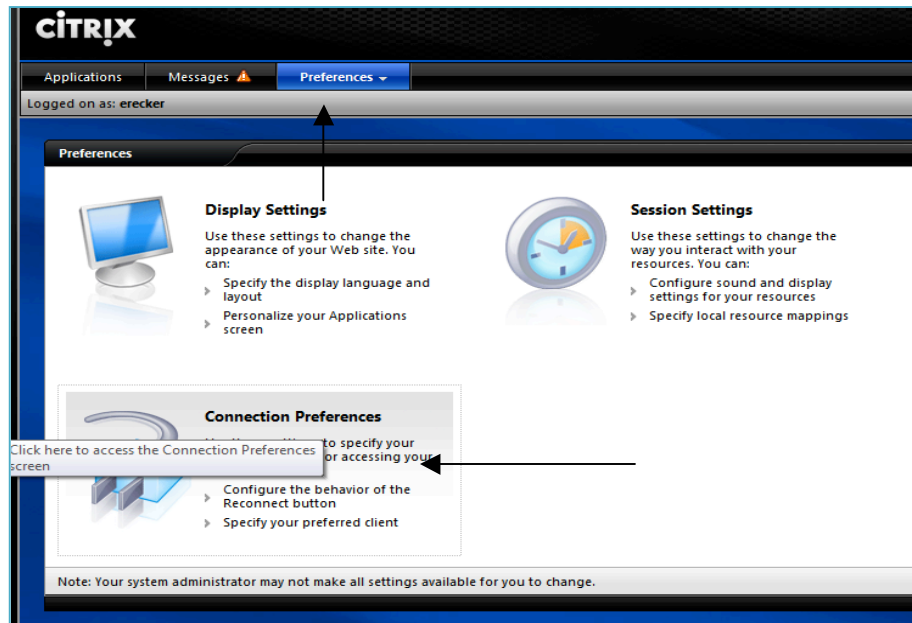
Lima Memorial Citrix Gateway Log-On

Instructions for Internet Explorer Version 7, 8 and 9

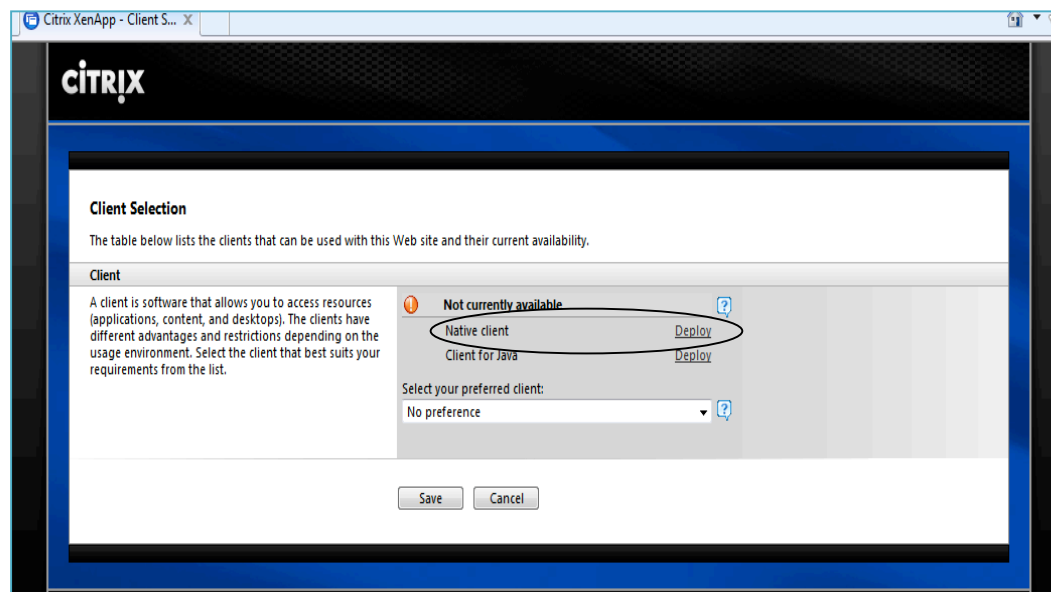
**** If application will not launch follow the instructions below****

Disclaimer: These instructions are provided to help you access LMHS Gateway. Doing these steps will make changes to your device. Lima Memorial Health System will not be liable for any issues that you may experience on your device by following these steps.

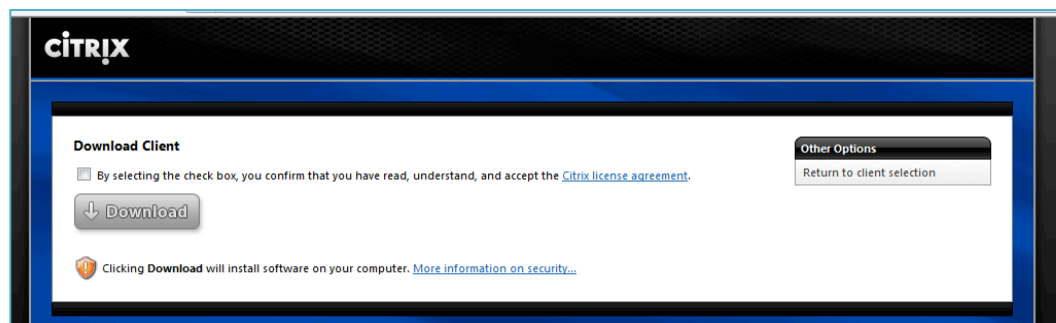
Click on Preference and then select Connection Preferences.



Click on Deploy next to Native Client



Click Download

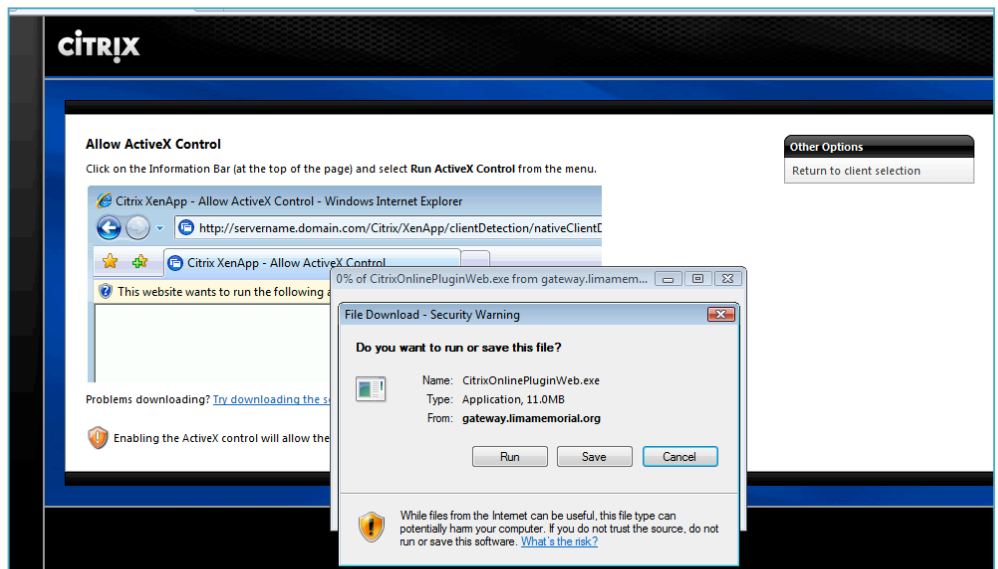


LIMA MEMORIAL HEALTH SYSTEM

Lima Memorial Citrix Gateway Log-On

Instructions for Internet Explorer Version 7, 8 and 9

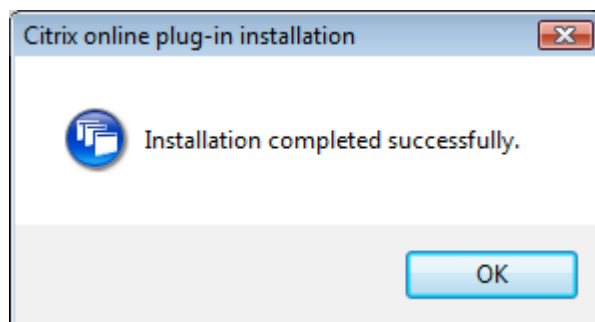
Click Save (select destination you would like to save to)



Click Run



You will then get a prompt letting you know installation was completed successfully.

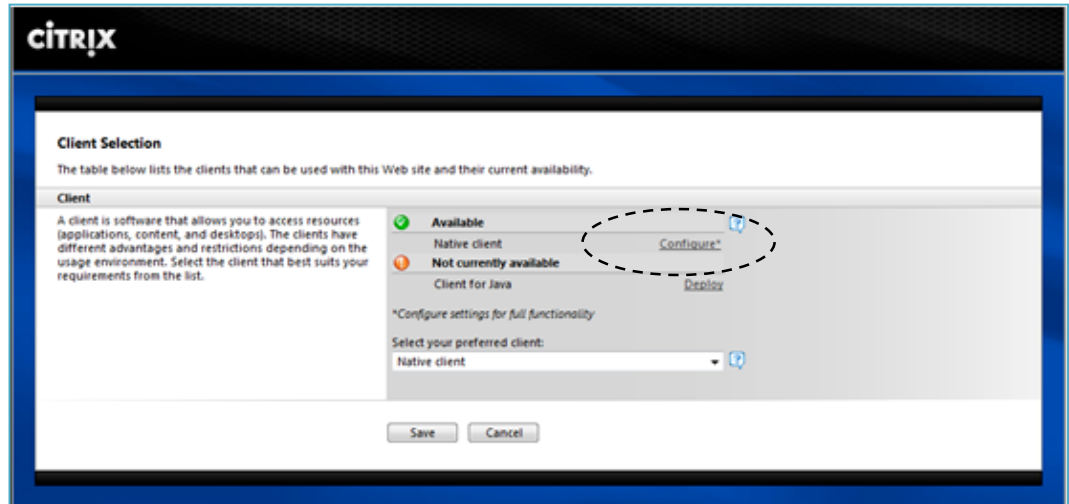


LIMA MEMORIAL HEALTH SYSTEM

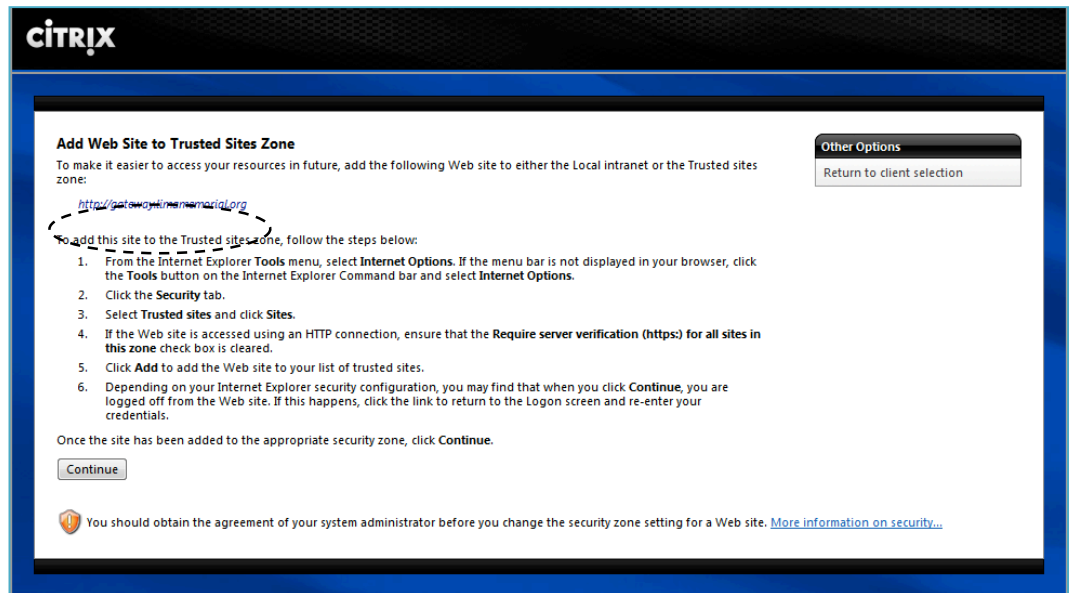
Lima Memorial Citrix Gateway Log-On

Instructions for Internet Explorer Version 7, 8 and 9

You may have to click on the configure link and add the site to the trusted site zone



This will be the direction for adding the <http://gateway.limamemorial.org> to the trusted site zone of your Internet Explorer settings.



Select your preferred client by clicking the black down triangle and selecting the native client.

